



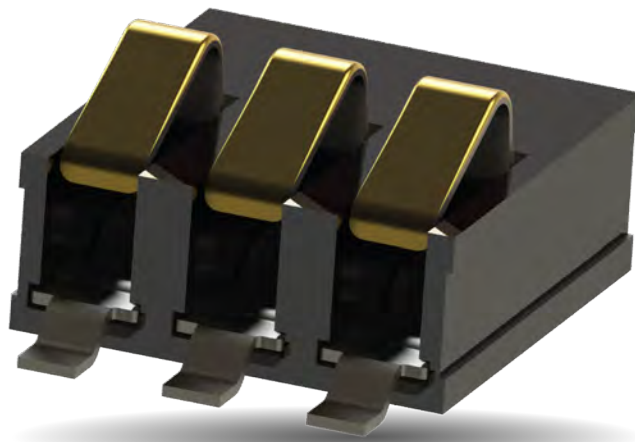
Scan QR Code For
More Information



STANDARD PRODUCT PORTFOLIO

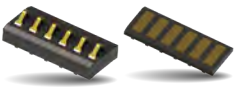


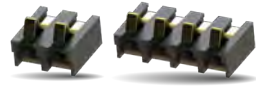
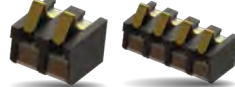

COMPRESSION CONTACT TECHNOLOGY

BATTERY CONNECTORS | BOARD-TO-BOARD




KEY FEATURES:

- > High Reliable, Fatigue Resistant, Gold Plated Beryllium Copper Contacts
- > Enhanced Deflection Capabilities to Absorb Assembly Tolerances
- > Maximized Contact Forces to Meet High Reliability / Harsh Environment Applications

| PARALLEL/ STACKING APPLICATIONS | Two Piece 9155-400 | Standard 9155-000*** | Ultra-Low Profile 9155-100 | Reduced 9155-200 | Reduced 9155-250 | Small Pitch 9155-020 |
|---|---|---|---|---|---|---|
| |  |  |  |  |  |  |
| Pitch | 4.0mm | 2.5mm | 2.5mm | 2.5mm | 2.5mm | 1.27mm |
| # of Positions | 2, 3, 4, 5, 6 | 3, 4, 5 | 2, 3 | 2, 3, 4, 5 | 2, 3, 4, 5 | 2, 3, 4, 5 |
| Compressed/Working Height from PCB Surface | 4.1mm to 7.3mm | 3.2mm to 5.0mm* | 1.3mm to 1.95mm | 2.5mm to 3.3mm | 4.1mm to 4.9mm | 2.5mm to 3.1mm |
| Deflection Force | 70g to 170g | 120g to 260g* | 40g to 110g | 40g to 100g | 40g to 100g | 30g to 55g |
| Current Rating | 5A/contact | 3A/contact | 3A/contact | 3A/contact | 3A/contact | 2p-3p : 3A/contact 4p-5p : 2A/contact |
| Durability | 50,000 cycles**** | 5,000 cycles | 5,000 cycles | 5,000 cycles | 5,000 cycles | 15,000 cycles |

*** Reduced nose version available (9155-050 Series)

| RIGHT ANGLE / PERPENDICULAR APPLICATIONS | 9155-300 | 9155-500 | 9155-700 | 9155-800** | 9155-900** | STRIPT® | | |
|---|--|--|--|---|--|----------------------------|------------------|-------------------------|
| |  |  |  |  |  | Single Contact 9155-600 | Pogo 9150-000 | Low Profile 9258-100 |
| Pitch | 3.0mm | 2.5mm | 2.0mm | 2.0mm | 2.5mm | N/A | N/A | N/A |
| # of Positions | 2, 3, 4, 5, 6 | 2, 3, 4, 5 | 2, 3, 4, 5, 6 | 2, 3, 4, 5, 6, 7, 8 | 2, 3, 4, 5, 6 | 1 | 1 | 1 |
| Contact Nose Height | 4.64mm | 2.10mm | 2.10mm | 1.40mm | 2.3mm | N/A | N/A | N/A |
| Working Deflection Range From Connector Face | 0mm to 1.0mm | 0.5mm to 1.5mm | 0.5mm to 1.5mm | 0.05mm to 0.55mm | 0.6mm to 1.4mm | 0.75mm to 1.75mm* | 1.9mm to 5.5mm* | 1.0mm to 3.75mm* |
| Deflection Force | 40g to 100g | 40g to 140g | 30g to 90g | 40g to 75g | 250g to 390g | 60g to 175g* | 25g to 110g* | 80g to 240g* |
| Current Rating | 3A/contact | 3A/contact | 2p-4p: 2.0A/contact 5p-6p: 1.5A/contact | 2p-4p: 2.0A/contact 5p-6p: 1.5A/contact | 3A | 3A | 1A | 6A |
| Durability | 5000 cycles | 5000 cycles | 5000 cycles | 5000 cycles | Up to 5000 cycles | 1000 cycles* | 10000 cycles | 2500 cycles |

* Based on multiple part numbers for a selection of heights or platings.

** Series 9155-800 supports parallel, perpendicular, and co-planar applications.

*** Reduced nose version available (9155-050 Series).

**** Series 9155-400 mating cycles based on mating horizontally in the forward direction.